

Get Rid of Roaches - Breathe Easier!

Roaches can trigger asthma attacks.



Roach sprays don't work. Sprays can make asthma worse.
Sprays can be harmful to health.

Instead of spraying,

- 1) Make changes to your home to starve-out, dry-out and keep-out roaches.
- 2) Use safer pest control products and methods.

Make changes to your home to starve-out, dry-out and keep-out roaches.

Starve Them Out

Roaches like to stay in places where they can find food. If they can't find food they probably will leave.

- Keep drawers, cabinets and counter tops free of food and clutter.
- Clean up spills and crumbs.
- Seal bags and containers of food.
- Cover trash. Don't leave food out overnight.



Cover Food

Dry Them Out

Roaches can't live without water to drink. Get rid of standing water all over the house.

- Fix leaky faucets and pipes.
- Always drain water from sink and bath after use.
- Keep drains clear of water and garbage.
- Keep all areas of the house clean and dry, including the basement, kitchen, and bathrooms.



Fix Leaks

Keep Them Out

Stop roaches from becoming a problem. Keep them out of your house.

- Keep your house clean and in order.
- Put screens over vents and pipes that open to outside.
- Seal cracks and openings with caulk along baseboards, behind sinks, and around windows.
- Vacuum and mop your floors regularly.



Clean up

National Pesticide Information Center 1-800-858-7378

Developed by U.S. EPA Region 5, Waste, Pesticides and Toxics Division

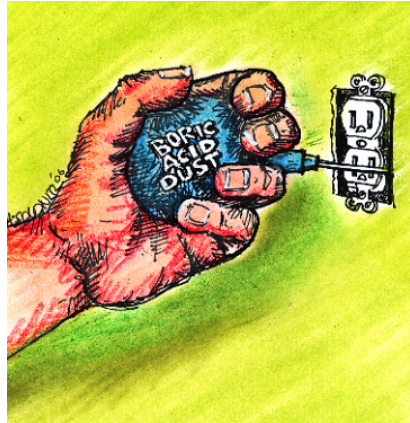
Use safer and more effective pest control products - borate powders and gel baits.

Use small amounts. Place where children can't reach.

Put where roaches hide and eat. Follow instructions on label.

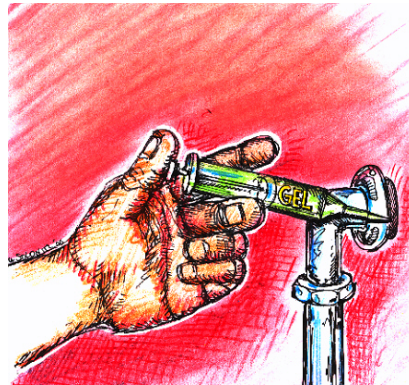
Borate Powders

- Apply behind walls, shelves, sinks and cabinets
- Put where they won't get wet
- Use a very light dusting. Seal in with caulk.



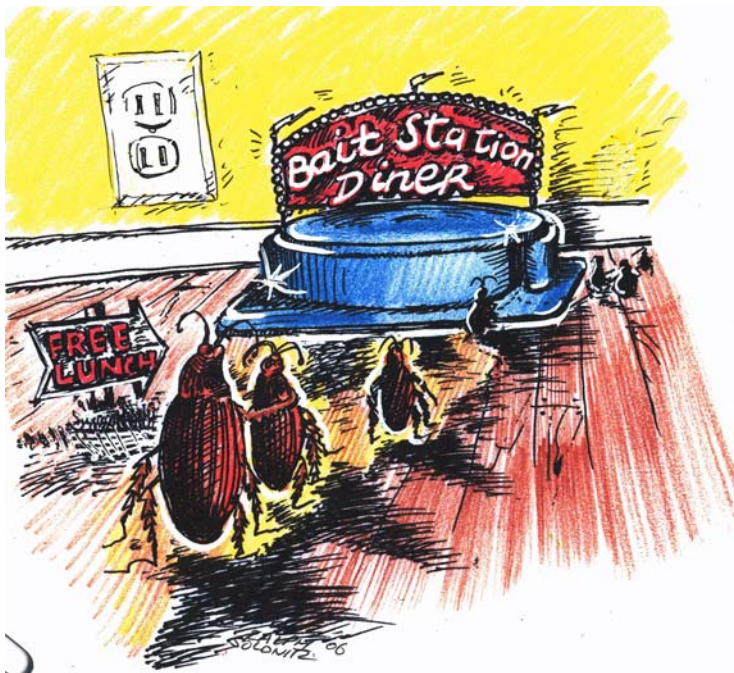
Roach Baits

- Gel bait
It comes in a small syringe.
Squeeze little dots at edges and corners in cabinets, under appliances and near plumbing.
- Bait Stations
Place several small plastic stations in areas where you see roaches.
Place along baseboards and in corners.

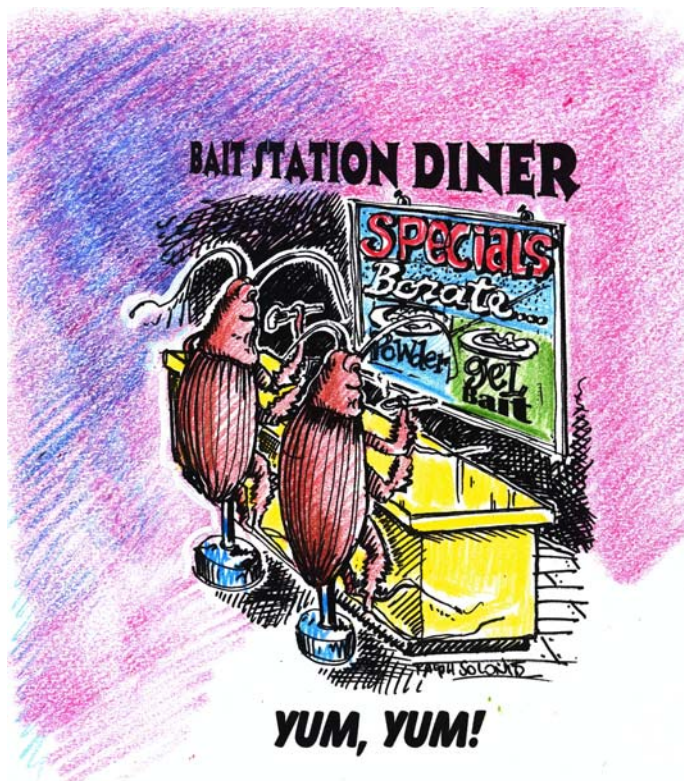


See How Baits Work →

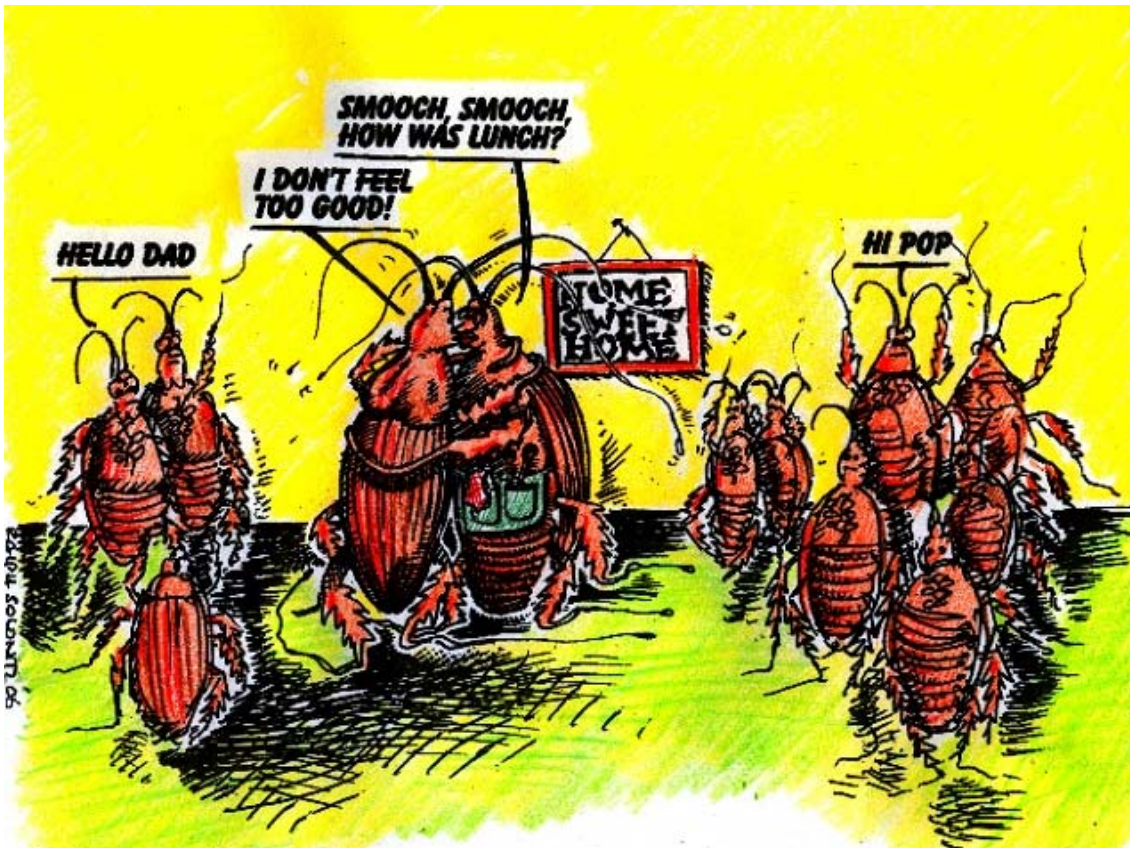
How Roach Baits Work . . .



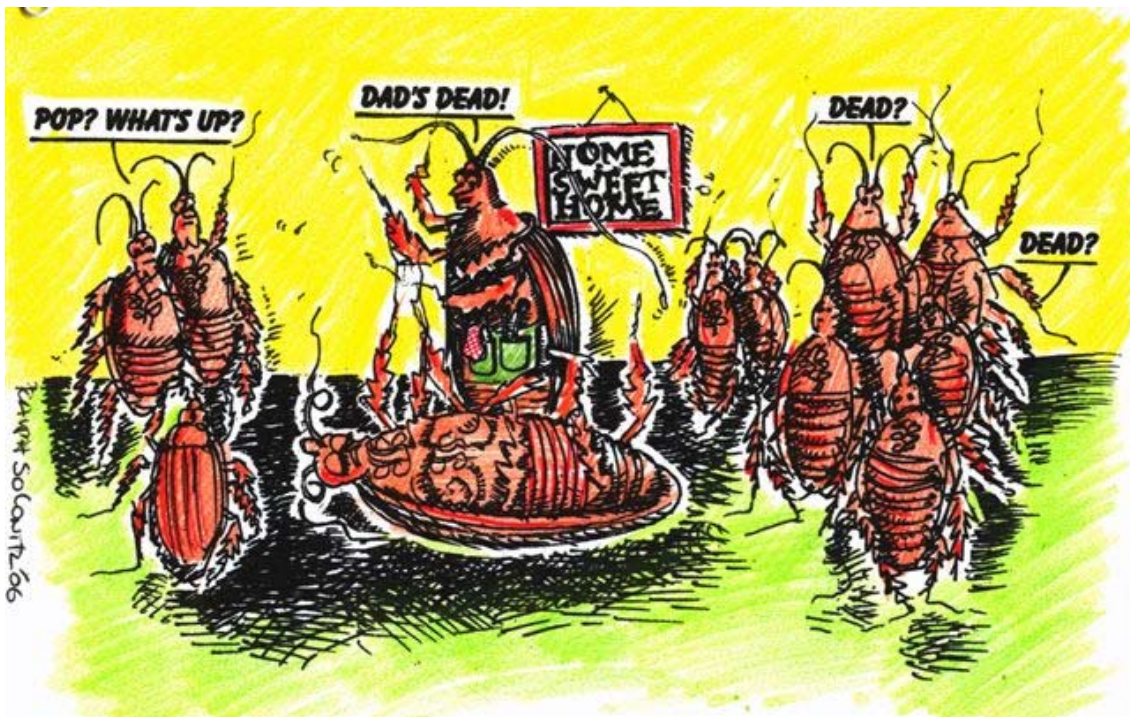
Roaches smell the bait.



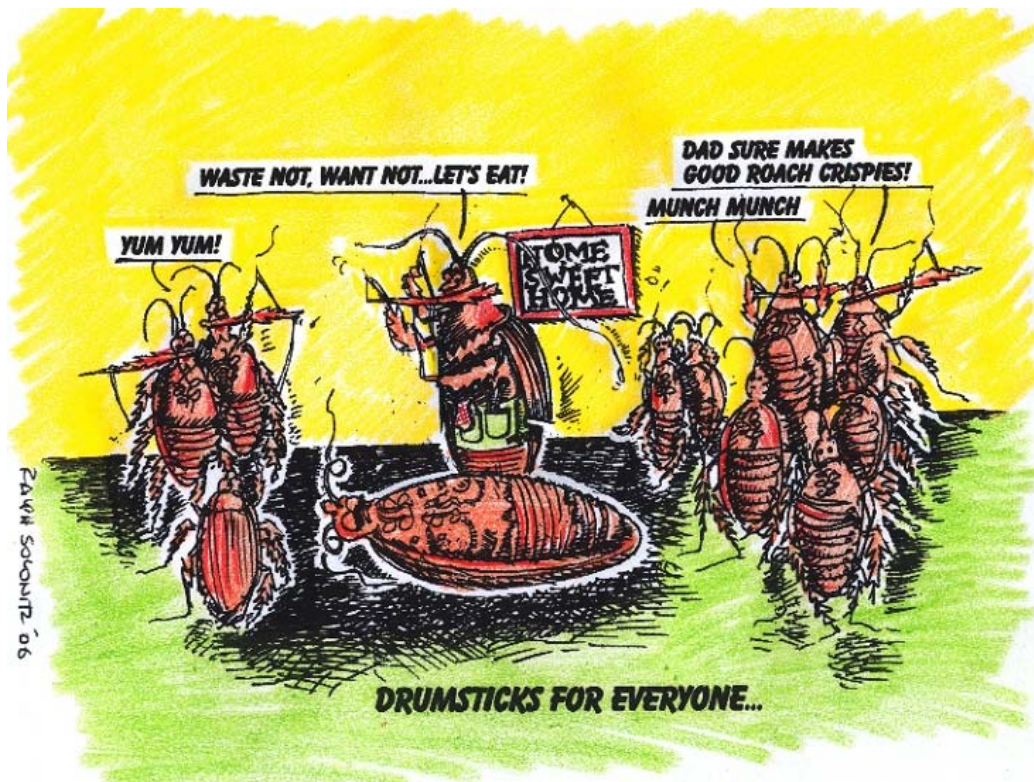
Roaches eat the bait.



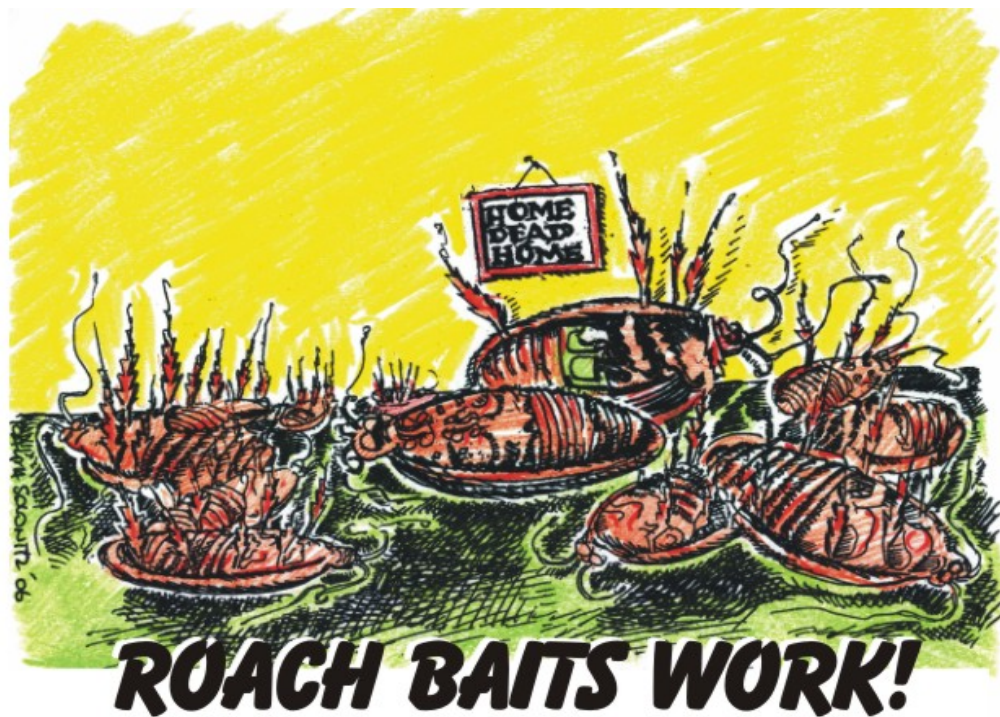
Poisoned roaches return home.



Poisoned roaches die and . . .



... Other roaches eat the dead roach.



Those roaches are poisoned and die too!